

NACHI

Hydraulic Equipment

for Industrial Machines



Pumps

Vane Pumps



Features

- Low Vibration and Noise
- High Efficiency Operation with Minimal Power Loss
- Precise Characteristics, Prompt Response

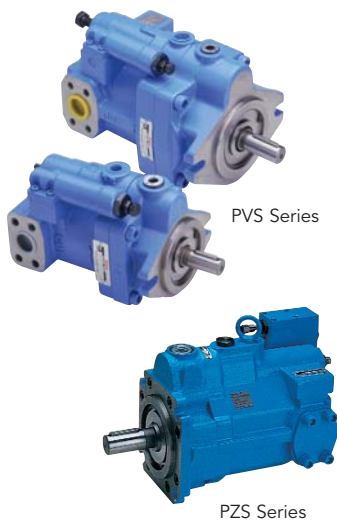
Series	Mounting flange	Max. pressure MPa(psi)	Max. flow L/min(gpm) at 1800rpm
VDS-0B-1A3-**	SAE A 2 bolts	7(1015)	15(4.0)
VDC-1B-1A5-**	SAE A 2 bolts (Note 1)	14(2030)	30(7.9)
VDC-1B-2A3-**	SAE A 2 bolts (Note 1)	7(1015)	40(10.6)
VDC-2B-1A5-**	SAE B 2 bolts (Note 2)	14(2030)	54(14.3)
VDC-2B-2A3-**	SAE B 2 bolts (Note 2)	7(1015)	70(18.5)
VDC-3B-1A5-**	SAE C 2 bolts	14(2030)	120(31.7)

Notes:

Note 1 VDC-1B-*A*-E35 only has a SAE A 2 bolts type flange.

Note 2 VDC-2B-*A*-E35 only has a SAE B 2 bolts type flange.

Piston Pumps



Features

- Energy-saving type with drastically reduced loss.
- Because of increasing the number of pistons,(from 9 to 11) they operate with low-noise and low-pulsation. (PVS-2B, PZS)
- Many optional functions available.

Series	Mounting flange	Max. pressure MPa(psi)	Max. flow L/min(gpm) at 1800rpm
PVS-0B-8N3-**	SAE A 2 bolts	21(3045)	14(3.7)
PVS-1B-16N3-**	SAE A 2 bolts	21(3045)	29(7.7)
PVS-1B-22N3-**	SAE A 2 bolts	21(3045)	40(10.6)
PVS-2B-35N3-**	SAE B 2 bolts	21(3045)	63(16.6)
PVS-2B-45N3-**	SAE B 2 bolts	21(3045)	81(21.4)
PZS-3B-70N4-**	—	28(4060)	126(33.3)
PZS-4B-100N4-**	SAE D 4 bolts	28(4060)	180(47.6)
PZS-5B-130N4-**	SAE E 4 bolts	25(3625)	234(61.8)
PZS-6B-180N4-**	SAE E 4 bolts	25(3625)	324(85.6)

Uni-Pump



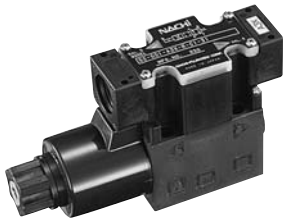
Features

- Energy Efficient Performance
- Lightweight, Compact Design
- Low Noise, Long Life
- 230vac and 460vac Electric Motors Available

Series	Max. pressure MPa(psi)	Max. flow L/min(gpm) at 1800rpm
UVN-1A-0A4-**	8(1160)	14(3.7)
UVN-1A-1A4-**	8(1160)	29(7.7)

■ Directional Control Valves

G01 Size Solenoid Operated Directional Control Valves



SS-G01 Series



SA-G01 Series

Features

- Recognized by Overseas Safety Standards (UL, CSA and CE)
- High Pressure, Large Capacity with Minimal Pressure Loss
- Low Power Consumption of Coil
- Indicator Light and COM Port Come Standard (SS-G01)
- M12 4 Pin Connector Available For Simple Wiring
- Low Switching Noise
- Very Long Life

Series	Electrical Connection	Interface	Max. pressure MPa(psi)	Max. flow L/min(gpm)
SS-G01-**-E31	Terminal Box	ISO 4401-03-02-0-94	35(5075)	100(26.4)
SA-G01-**-E31	DIN Connector	ISO 4401-03-02-0-94	35(5075)	100(26.4)

G03 Size Solenoid Operated Directional Control Valves



SS-G03 Series

Features

- Recognized by Overseas Safety Standards (UL and cUL)
- High Pressure, Large Capacity with Minimal Pressure Loss
- Low Power Consumption of Coil
- Indicator Light and COM Port Come Standard (SS-G03)
- Low Switching Noise
- Very Long Life

Series	Electrical Connection	Interface	Max. pressure MPa(psi)	Max. flow L/min(gpm)
SS-G03-**-E21	Terminal Box	ISO 4401-05-04-0-94	35(5075)	160(42.3)
SA-G03-**-E21	DIN Connector	ISO 4401-05-04-0-94	35(5075)	160(42.3)

Solenoid Controlled Pilot Operated Directional Valves



DSS-G06 Series

Features

- Recognized by UL
- High Pressure, Large Capacity with Minimal Pressure Loss
- Low Power Consumption of Coil
- Indicator Light and COM Port Come Standard (DSS-G06)
- Built-in Pilot Pressure Check Valve

Series	Electrical Connection	Interface	Max. pressure MPa(psi)	Max. flow L/min(gpm)
DSS-G06-**-E22	Terminal Box	ISO 4401-08-07-0-94	32(4640)	600(158.5)
DSA-G06-**-E22	DIN Connector	ISO 4401-08-07-0-94	32(4640)	600(158.5)

Manually Operated Directional Control Valves



DMA Series

Series	Interface	Max. pressure MPa(psi)	Max. flow L/min(gpm)
DMA-G01-**-E20	ISO 4401-03-02-0-94	35(5075)	40(10.6)
DMA-G03-**-E20	ISO 4401-05-04-0-94	35(5075)	100(26.4)

■ Modular Valves

Modular Valves Series



Modular Valve Series

Features

- Quick and Easy Circuit Configuration, Changes and Additions
- Compact Module Configurations Greatly Reduce Space Requirements and Maintenance Costs

Mounting and Size	Interface	Max. pressure MPa(psi)	Max. flow L/min(gpm)
G01	ISO 4401-03-02-0-94	25(3625)	50(13.2)
G03	ISO 4401-05-04-0-94	25(3625)	100(26.4)

■ Pressure Control Valves

Relief Valves



R Series

Series	Interface	Max. pressure MPa(psi)	Max. flow L/min(gpm)
R-T06-3-E20	NPT 3/4	21(3045)	170(44.9)
R-T10-3-E20	NPT 1 1/4	21(3045)	380(100.4)

■ Proportional Control Valves

Proportional Pressure Control Valve Series



EPR Series

ER Series

Series	Interface	Max. pressure MPa(psi)	Max. flow L/min(gpm)
EPR-G01-5-E12	ISO 4401-03-02-0-94	35(5075)	1.2(0.3)
ER-G03-5-E21	ISO 6264-AR-06-2-A	35(5075)	150(39.6)
ER-G06-5-E21	ISO 6264-AS-08-2-A	35(5075)	320(84.5)

Proportional Flow Control Valve Series



ES Series

Series	Interface	Max. pressure MPa(psi)	Max. flow L/min(gpm)
ES-G02-30-E12	Sub plate	21(3045)	30(7.9)
ES-G03-125-E12	Sub plate	21(3045)	125(33.0)
ES-G06-250-E11	Sub plate	21(3045)	250(66.1)
ES-G10-500-E11	Sub plate	21(3045)	500(132.1)

Proportional Directional and Flow Control Valve Series



ESD Series

Series	Interface	Max. pressure MPa(psi)	Max. flow L/min(gpm)
ESD-G01-C520-E12	ISO 4401-03-02-0-94	25(3625)	25(6.6)
ESD-G03-C580-E12	ISO 4401-05-04-0-94	25(3625)	100(26.4)
ESD-G06-C5250-E13	ISO 4401-08-07-0-94	25(3625)	250(66.1)

NACHI

NACHI AMERICA INC.

17500 23 Mile Road, Macomb, MI 48044 • Tel. (800)622-4410 Fax. (586)226-5289

Email: hydraulics@nachi-america.com www.nachi-hydraulics.com