



# RUGGED FLAT PANEL MONITORS FOR THE INDUSTRIAL CONTROL MARKET





## ENDURANCE TO WITHSTAND THE ENVIRONMENT

Survival of the fittest ... a phrase that best describes our rugged industrialized monitors.

An HMI workstation is a single interface for managing recipes and monitoring control variables and alarm systems. The ability to easily access this information from the plant floor saves time and can prevent process interruptions. Pepperl+ Fuchs VisuNet industrial monitors are a key component in plant floor visualization and are engineered to endure harsh unyielding environments. Hot or cold, dirty, dusty, wet, grimy process surroundings are no match to the resilience of the VisuNet industrial design.

To learn more go to:  
[www.pepperl-fuchs.com/visunet-industrial](http://www.pepperl-fuchs.com/visunet-industrial)



*Displays can be integrated with purge systems for Class II Div.1 hazardous environments*

*Touchscreens offer easy mouse emulation with finger, glove, or stylus*



## OPTIONS AND ACCESSORIES

By using only the highest-quality components, we ensure the most rugged and longest-lasting industrial monitors in any environment.

### Options

- Resistive touchscreens – the most accurate and reliable technology on the market
- Hardened resistive touchscreens – provides chemical resistance, abrasion and impact protection
- Anti-glare and transfective screens (select sizes) – reduces bright spots, washout, and eye strain
- Class I/Div. 1 hazardous environment mounting with Pepperl+Fuchs Bebcos EPS purge systems

### Accessories

- Power supplies
- Power cables, USB and serial touchscreen cables, video cables
- Screen protectors

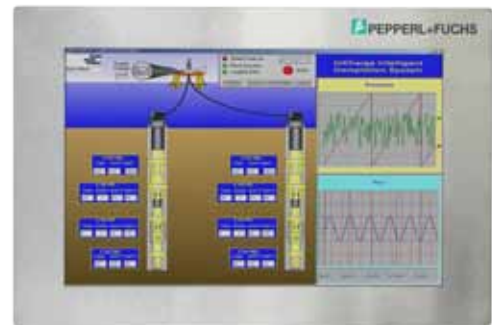
## YOUR BENEFITS

- Properly engineered for continuous duty in general-purpose and Class I, Class II/Div. 2 and Zone 2 hazardous rated areas
- Wide ranging in display sizes and configurations
- Longest MTBF in the industry (> 550,000 hours)
- Flat panel LCDs to complete visualization systems

## SELECTABLE CONFIGURATIONS

Need a stainless steel bezel or an enclosed housing? No problem. Pepperl+Fuchs VisuNet industrial monitors are fully configurable to suit your application requirements.

- Panel mount with stainless steel or black painted steel bezel
- Rack mount
- Chassis mount
- Enclosed with VESA mounting pattern



22" widescreen panel mount monitor with stainless steel bezel

## PRODUCT SPECIFICATIONS

Model Number	DM510	DM512	DM515	DM518	DM519	DM522
Reference Number	(LS10)	(LS12)	(LX15)	(LSX18)	(LSX19)	—
<b>Diagonal Viewing Area</b> (in)	10	12.1	15	18.1	19	22
<b>Equivalent CRT Size</b> (in)	12	14	17	20	21	—
<b>Native Resolution</b>	800 x 600	800 x 600	1024 x 768	1280 x 1024	1280 x 1024	1680 x 1050
<b>Maximum Resolution</b>	800 x 600	1024 x 768	1280 x 1024	1600 x 1200	1600 x 1200	1680 x 1050
<b>Brightness</b> (nit)	400	400	500	240	300	300
<b>Contrast</b>	700:1	600:1	600:1	300:1	600:1	600:1
<b>Overall:</b>						
<b>Width x Height x Depth</b> (in)	12.1 x 9.9 x 3	13.9 x 11.5 x 3	16.9 x 13.6 x 2.9	19 x 16.2 x 3.7	19 x 16.2 x 3.7	22.5 x 15.5 x 3.0
(mm)	307 x 252 x 76	353 x 292 x 76	429 x 345 x 74	483 x 412 x 94	483 x 412 x 94	572 x 394 x 76
<b>Cutout:</b>						
<b>Width x Height</b> (in)	11.1 x 8.9	12.6 x 10.2	15.9 x 12.6	17.9 x 15.2	17.9 x 15.2	21.2 x 14.2
(mm)	282 x 226	320 x 259	404 x 320	455 x 386	455 x 386	536 x 358
<b>Class I, Class II/Div. 2 Rated</b>	■	■	■	■	■	■
<b>Zone 2 Rated</b>		■	■		■	
<b>Panel Mount</b>	■	■	■	■	■	■
<b>Enclosed Mount</b>		■	■	■	■	
<b>Chassis Mount</b>		■	■			
<b>Stainless Steel Bezel</b>	■	■	■	■	■	■
<b>Current Consumption: @ 12 VDC</b>	1.2 A	1.2 A	2.5 A	3.8 A	3.2 A	4.5 A
<b>Certification</b>	UL	UL & ATEX	UL & ATEX	UL	UL & ATEX	UL

# PROCESS AUTOMATION – PROTECTING YOUR PROCESS



For over a half century, Pepperl+Fuchs has provided new concepts for the world of process automation. Our company sets standards in quality and innovative technology. We develop, produce and distribute electronic interface modules, Human-Machine Interfaces and hazardous location protection equipment on a global scale, meeting the most demanding needs of industry. Resulting from our world-wide presence and our high flexibility in production and customer service, we are able to offer complete individual solutions – wherever and whenever you need us. We are the recognized experts in our technologies – Pepperl+Fuchs has earned a strong reputation by supplying the world's largest process industry companies with the broadest line of proven components for a diverse range of applications.

**1 Worldwide/German Headquarters**  
Pepperl+Fuchs GmbH  
Mannheim · Germany  
Tel. +49 621 776 2222  
E-Mail: [pa-info@de.pepperl-fuchs.com](mailto:pa-info@de.pepperl-fuchs.com)

**2 Asia Pacific Headquarters**  
Pepperl+Fuchs PTE Ltd.  
Singapore  
Company Registration No. 199003130E  
Tel. +65 6779 9091  
E-Mail: [pa-info@sg.pepperl-fuchs.com](mailto:pa-info@sg.pepperl-fuchs.com)

**3 Central/Western Europe & Africa Headquarters**  
Pepperl+Fuchs N.V.  
Schoten/Antwerp · Belgium  
Tel. +32 3 6442500  
E-Mail: [pa-info@be.pepperl-fuchs.com](mailto:pa-info@be.pepperl-fuchs.com)

**4 Middle East Headquarters**  
Pepperl+Fuchs M.E (FZE)  
Dubai · UAE  
Tel. +971 4 883 8378  
E-Mail: [pa-info@ae.pepperl-fuchs.com](mailto:pa-info@ae.pepperl-fuchs.com)

**5 North/Central America Headquarters**  
Pepperl+Fuchs Inc.  
Twinsburg · Ohio · USA  
Tel. +1 330 486 0002  
E-Mail: [pa-info@us.pepperl-fuchs.com](mailto:pa-info@us.pepperl-fuchs.com)

**6 Northern Europe Headquarters**  
Pepperl+Fuchs GB Ltd.  
Oldham · England  
Tel. +44 161 6336431  
E-Mail: [pa-info@gb.pepperl-fuchs.com](mailto:pa-info@gb.pepperl-fuchs.com)

**7 Southern/Eastern Europe Headquarters**  
Pepperl+Fuchs Elcon srl  
Sulbiate · Italy  
Tel. +39 039 62921  
E-Mail: [pa-info@it.pepperl-fuchs.com](mailto:pa-info@it.pepperl-fuchs.com)

**8 Southern America Headquarters**  
Pepperl+Fuchs Ltda.  
São Bernado do Campo · SP · Brazil  
Tel. +55 11 4341 8448  
E-Mail: [pa-info@br.pepperl-fuchs.com](mailto:pa-info@br.pepperl-fuchs.com)

[www.pepperl-fuchs.com](http://www.pepperl-fuchs.com)

 **PEPPERL+FUCHS**  
PROTECTING YOUR PROCESS