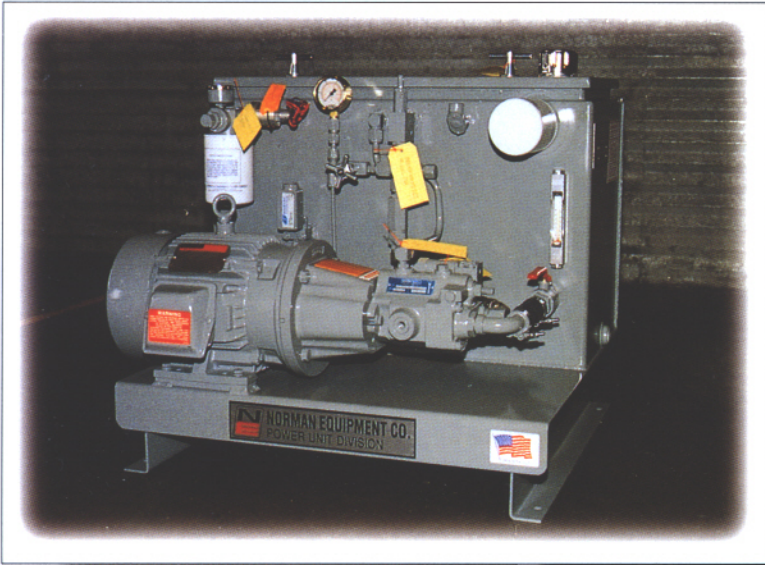




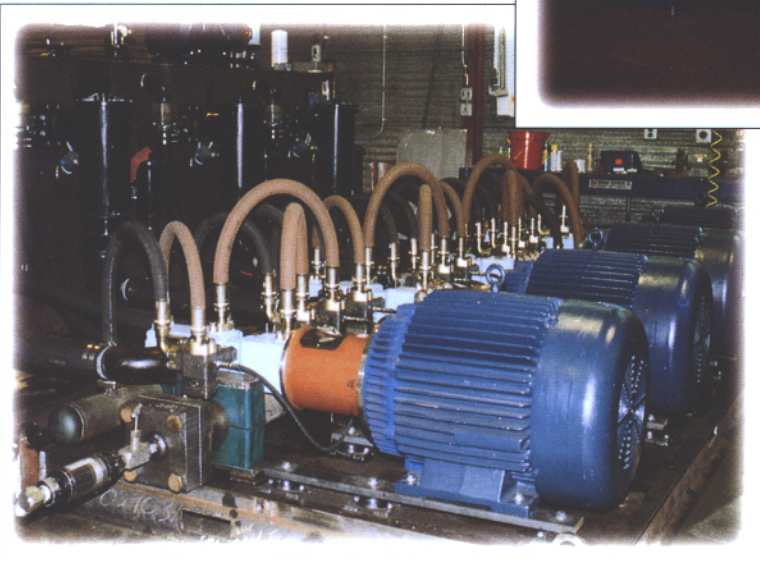
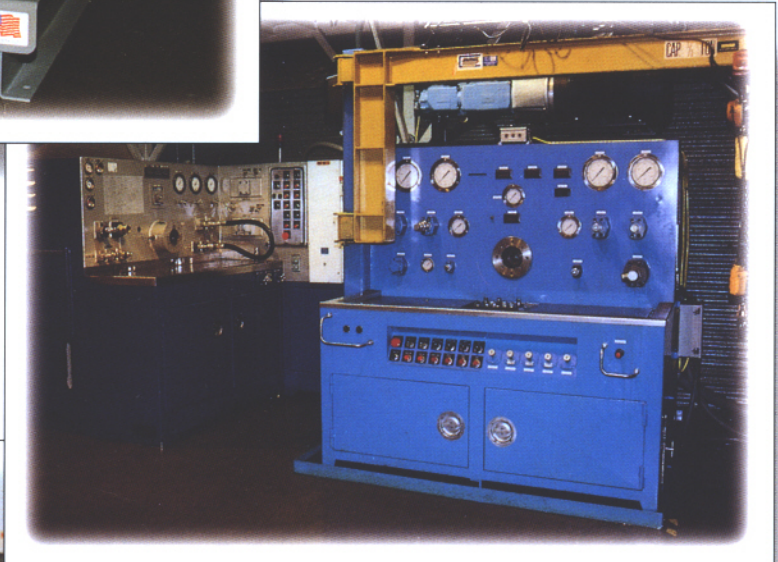
NORMAN EQUIPMENT COMPANY
POWER UNIT DIVISION

FLUID POWER SOLUTIONS



STANDARD POWER UNITS

CUSTOM TEST STANDS



LARGE SCALE PRODUCTION UNITS



CAPABILITY STATEMENT

The Norman Equipment Company Power Unit Division is the manufacturing arm of Norman Equipment Company. Concept, design, engineering, manufacturing and on-time delivery are all part of our total customer satisfaction goal.

As does Norman, the Power Unit Division brings a long history of success and experience to the table. We manufacture Power Units, Test Stands, Custom Manifolds, Custom Panels, Custom Assemblies and provide Packaging services. Our design team includes mechanical and electrical engineers, skilled technicians with extensive CAD experience in Versa CAD and Auto CAD13. The entire Power Unit Division is housed in our 14,000 sq. ft. New Berlin, Wisconsin plant.

Our machine shop is service oriented. Welding capabilities consist of MIG, TIG, arc, and Heli-Arc of aluminum, mild steel and stainless steel. Pipe bending up to 2 inches, "while you wait" custom hose assemblies up to 5000 psi, standard and custom painting in our large 18x12x15ft paint booth are examples of our commitment to total customer satisfaction.

Our extensive test facility consists of a large 800 gallon reservoir, 600 amp, 480 volt power supply and a 250 HP multipurpose test bench enabling performance verification of all components.

On site maintenance, installation and system trouble shooting services are offered along with documentation, private labeling and bar-coding of products. All in an effort to ensure total customer satisfaction.

QUALITY STATEMENT

Quality of finished product is of paramount importance to Norman Equipment Company. Fabrication is performed in a thorough, workmanlike manner by skilled trade mechanics following the best modern practice. To ensure long-term reliable performance, we incorporate universally available parts, including ISO certified components. Unit lay-out is designed to create easy access for ongoing maintenance.

All units must pass extensive visual inspection before being 100% tested to system and component specifications. Accompanying documentation and service manuals are standard.